

NOTICE TO MARINERS

04.10.2017

DUDGEON OFFSHORE WIND FARM CONSTRUCTION WORKS

NOTICE IS HEREBY GIVEN that construction activities are still ongoing at the Dudgeon Offshore Wind Farm.

All installation work is completed, and final commissioning is being finalized. Commissioning of turbines expected completed by next week. Minor modification work will be ongoing on the Substation platform in the middle of the windfarm towards end of October.

Service Operation Vessel

The ESVAGT NJORD is performing support for the operation of the wind farm and will be in regular transit between the Dudgeon site and Great Yarmouth.

Wind Turbine Generator Installation

Completed.

Location	Easting	Northing	Lon DD	Lat DD	Depth LAT [m]
Sub-Station	391 870	5 902 955	1,378776	53,264808	-21,1
L01	391 174	5 901 522	1,368835	53,251789	-21,0
L02	391 122	5 900 148	1,368526	53,239433	-19,9
L03	391 760	5 899 631	1,378257	53,234918	-20,2
L04	392 399	5 899 114	1,388002	53,230402	-21,0
L05	393 038	5 898 596	1,397745	53,225877	-20,6
K01	392 045	5 902 246	1,381639	53,258473	-21,5
K02	391 907	5 900 928	1,380019	53,246602	-21,2
K03	392 640	5 900 334	1,391200	53,241413	-20,8
K04	393 373	5 899 739	1,402378	53,236214	-21,0
K05	393 676	5 898 079	1,407470	53,221359	-21,8
T01	392 212	5 903 533	1,383706	53,270071	-21,5
T02	392 948	5 902 936	1,394938	53,264856	-22,1
T03	394 241	5 900 466	1,415137	53,242920	-21,8
T04	394 974	5 899 873	1,426312	53,237737	-22,3
T05	394 840	5 898 551	1,424742	53,225832	-21,2
J01	392 777	5 901 653	1,392808	53,253293	-23,1

Location	Easting	Northing	Lon DD	Lat DD	Depth LAT [m]
J02	393 509	5 901 060	1,403974	53,248112	-22,5
J03	394 107	5 899 145	1,413569	53,231024	-21,7
J04	394 315	5 897 562	1,417208	53,216841	-22,3
J05	394 954	5 897 045	1,426945	53,212322	-21,2
F01	392 353	5 904 837	1,385377	53,281817	-21,7
F02	393 254	5 905 526	1,398654	53,288190	-23,2
F03	392 649	5 906 016	1,389417	53,292470	-22,8
F04	392 044	5 906 506	1,380177	53,296750	-22,4
F05	391 439	5 906 996	1,370936	53,301030	-22,0
F06	390 834	5 907 486	1,361693	53,305308	-22,3
E01	391 477	5 904 129	1,372486	53,275276	-22,2
E02	391 619	5 905 431	1,374170	53,287004	-22,4
E03	390 886	5 906 025	1,362975	53,292191	-20,7
E04	390 153	5 906 619	1,351778	53,297377	-20,6
E05	390 229	5 907 976	1,352448	53,309586	-21,5
E06	389 624	5 908 466	1,343201	53,313863	-21,1
D01	390 741	5 904 726	1,361247	53,280489	-21,7
D02	390 006	5 905 323	1,350022	53,285702	-20,9
D03	389 271	5 905 920	1,338793	53,290913	-20,1
D04	389 420	5 907 213	1,340577	53,302562	-20,2
D05	388 971	5 907 930	1,333591	53,308910	-20,3
D06	388 265	5 907 463	1,323165	53,304566	-20,3
B01	391 313	5 902 840	1,370468	53,263661	-21,5
B02	390 441	5 902 117	1,357649	53,256985	-19,9
B03	389 708	5 902 711	1,346460	53,262170	-20,5
B04	388 975	5 903 306	1,335268	53,267364	-19,3
B05	388 041	5 904 311	1,320916	53,276197	-18,2
B06	387 985	5 903 523	1,320354	53,269105	-18,2
G02	394 465	5 904 546	1,417139	53,279626	-23,6
G03	395 070	5 904 056	1,426371	53,275343	-24,3
G04	395 675	5 903 566	1,435601	53,271060	-25,1
G05	396 281	5 903 077	1,444844	53,266785	-26,4
G06	396 225	5 902 259	1,444272	53,259423	-25,6
H01	393 086	5 904 243	1,396567	53,276627	-21,4
H02	393 820	5 903 649	1,407769	53,271438	-23,5
H03	394 553	5 903 055	1,418953	53,266246	-23,9
H04	395 287	5 902 461	1,430149	53,261054	-24,4
H05	395 204	5 901 199	1,429321	53,249698	-22,5
H06	396 170	5 901 440	1,443715	53,252053	-24,5
A01	390 483	5 900 665	1,358777	53,243947	-19,5
A02	389 845	5 901 183	1,349042	53,248469	-19,6
A03	389 206	5 901 700	1,339289	53,252982	-19,0
A04	388 568	5 902 218	1,329549	53,257502	-19,2
A05	387 929	5 902 735	1,319792	53,262013	-18,8

Location	Easting	Northing	Lon DD	Lat DD	Depth LAT [m]
C01	390 580	5 903 434	1,359278	53,268847	-20,1
C02	389 848	5 904 027	1,348102	53,274024	-19,8
C03	389 117	5 904 621	1,336937	53,279209	-19,4
C04	388 097	5 905 099	1,321478	53,283289	-19,4
C05	388 153	5 905 887	1,322040	53,290382	-19,4
C06	388 209	5 906 675	1,322602	53,297474	-20,0

COORDINATE REFERENCE SYSTEM:

Datum: WGS84

Projection: UTM Zone 31N

Accommodation Vessel

The VESTLAND CYGNUS will be on location until end October 2017 as accommodation vessel for Turbine completion and modification works on the Substation.

Commissioning activities

For the commissioning work there are several Crew Transfers Vessels operating in the wind farm area on a daily basis. This activity is ongoing and will continue until commissioning completed. One vessel will remain as support for operation of the windfarm.

GENERAL

MARINERS ARE HEREBY INFORMED; that a statutory construction Safety Zone (exclusion zone) is in place at the wind farm site. This safety zone is defined by:

- A 500 metres radius around each wind turbine, offshore sub-station and their foundations whilst work is being performed as indicated by the presence of construction vessels; and
- A 50 metres radius around each wind turbine, the offshore sub-station platform and associated foundation structures installed, complete or incomplete but waiting to be commissioned as part of the Dudgeon offshore wind farm where personnel are present on, or are being landed on or being taken from the structures.

All vessels will exhibit appropriate lights and shapes prescribed by the International Regulations for Preventing Collisions at Sea.

ALL VESSELS ARE REQUESTED to give all construction and support vessels a wide berth.

MARINERS ARE ADVISED to navigate with caution and keep continued watch on VHF Ch. 16 when navigating the area.

A further notice to mariners will be issued when these works are completed, expected autumn 2017.

Please direct any enquiries regarding this notice to Statoil Wind Control Centre: statoilwindcontrol@statoil.com

A copy of this notice can also be found at:

<http://dudgeonoffshorewind.co.uk/news/notice-to-mariners>

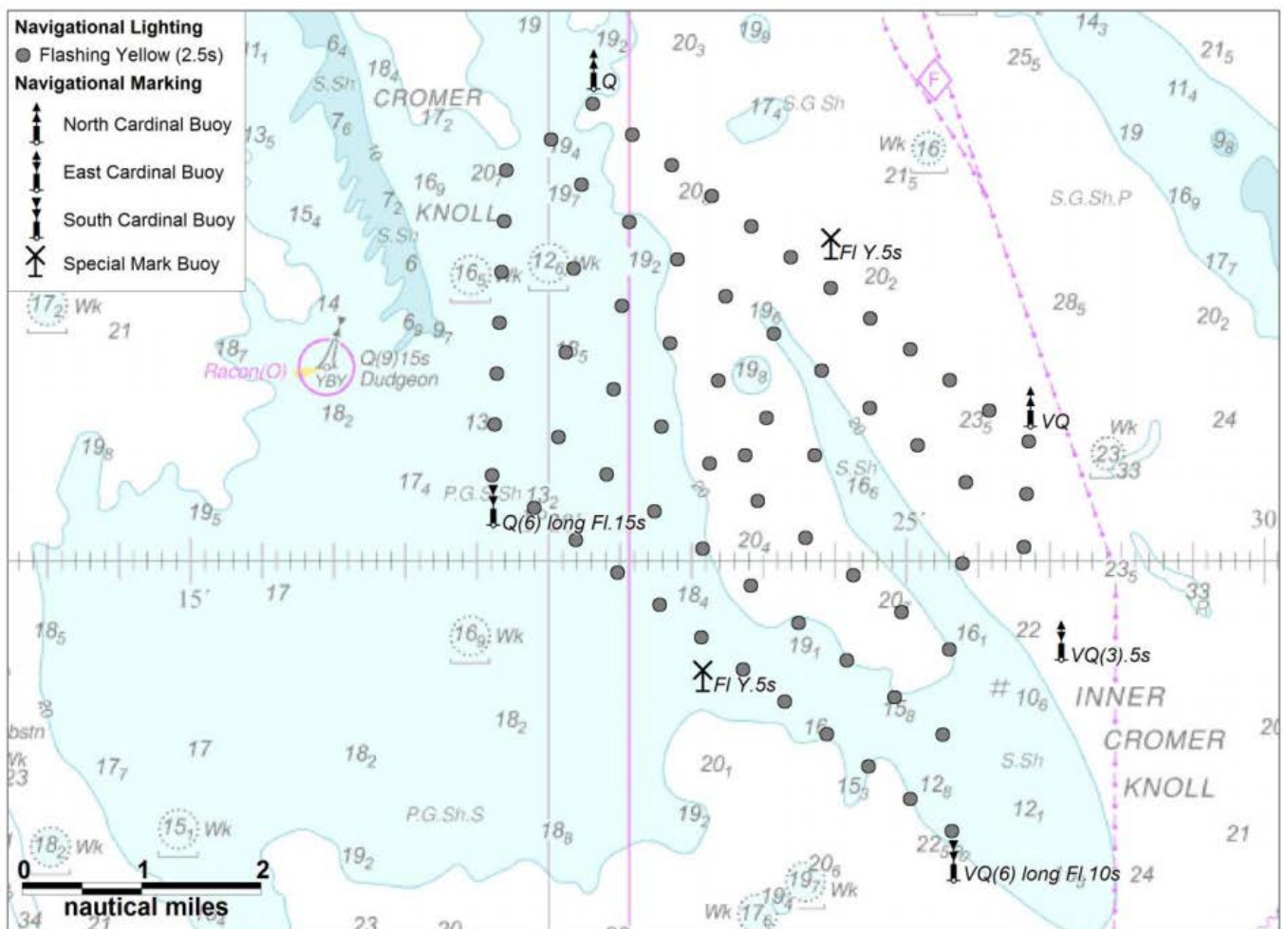
Fishing

The Dudgeon Wind Farm area is presently closed to fishing, but will be open for fishing activity from 15th October.

SITE DETAILS

Position of Navigation Buoys demarcating the Dudgeon Offshore Wind Farm site

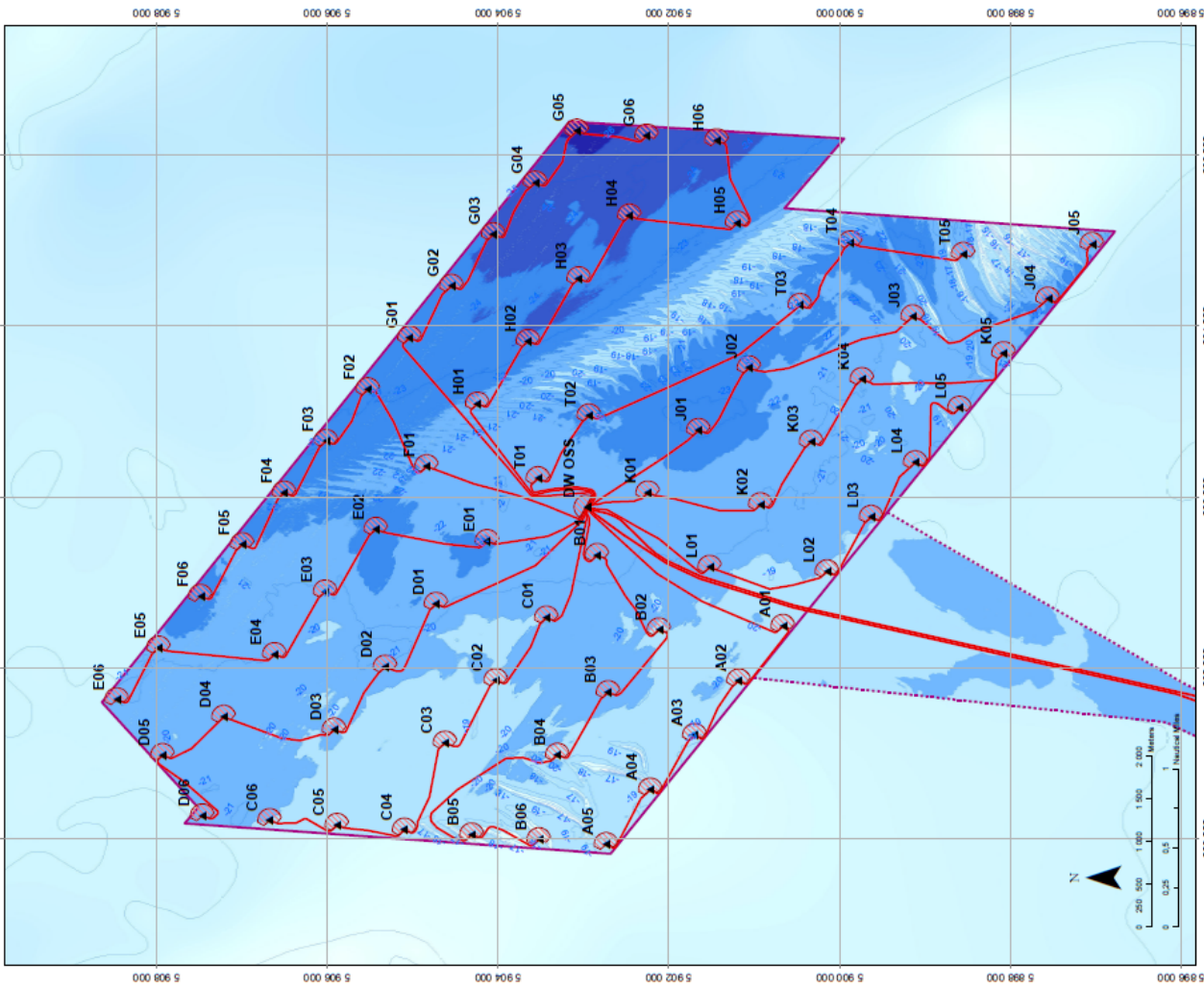
Mark	Location	Name	Latitude	Longitude	Status	Flash Character	Code	Range
North Cardinal	NW Cardinal	N-DOW	53° 19,102' N	1° 20,592' E	Temporary	Q	601	5nm
Special Mark	Special Mark North	DOW - SM - N	53° 17,631' N	1° 23,919' E	Temporary	Fl.Y.5s	328	5nm
North Cardinal	North East Cardinal	NE - DOW	53° 16,277' N	1° 26,691' E	Temporary	VQ	501	5nm
East Cardinal	East Cardinal	E- DOW	53° 14,320' N	1° 27,123' E	Temporary	VQ(3).5s	508	5nm
South Cardinal	SE Cardinal	S - DUDGEON	53° 12,470' N	1° 25,617' E	Permanent	VQ(6) long Fl.10s	516	5nm
Special Mark	Special Mark South	DOW - SM - S	53° 14,012' N	1° 22,132' E	Temporary	Fl.Y.5s	328	5nm
South Cardinal	SW Cardinal	SW - DOW	53° 15,451' N	1° 19,188' E	Temporary	Q(6) long Fl.15s	631	5nm



WTG ID and locations (coordinates)

WTG and Substation Locations

WTG	Easting	Northing	Lon DD	Lat DD	Depth	WTG	Easting	Northing	Lon DD	Lat DD	Depth
A01	390483.0	500066.0	1.38777	53.24347	-18.5	F06	390834.0	500748.0	1.391683	53.30508	-22.3
A02	398845.0	501153.0	1.39402	53.24949	-18.6	G01	398850.0	500035.0	1.407890	53.25308	-23.6
A03	388206.0	500700.0	1.39289	53.25286	-18.2	G02	394465.0	500656.0	1.417139	53.27928	-23.6
A04	388568.0	5002718.0	1.32854	53.25702	-18.2	G03	388570.0	500485.0	1.426371	53.27543	-24.3
A05	387620.0	5002782.0	1.318782	53.262013	-18.6	G04	388575.0	500355.0	1.435801	53.27109	-25.1
A06	391131.0	500947.0	1.39798	53.25685	-21.5	G05	388225.0	500255.0	1.444772	53.26623	-20.4
A07	390793.0	500711.0	1.39489	53.25917	-18.6	H01	390280.0	500434.0	1.398587	53.27693	-21.0
A08	388675.0	500339.0	1.38288	53.26784	-19.3	H02	393200.0	500364.0	1.407789	53.27148	-23.5
A09	388941.0	500431.0	1.39018	53.278107	-18.2	H03	394653.0	500095.0	1.418863	53.28248	-23.9
A10	387585.0	500362.0	1.390354	53.269105	-18.2	H04	395287.0	500461.0	1.430149	53.281054	-24.4
B01	390580.0	500343.0	1.392078	53.268947	-20.1	H05	395204.0	500189.0	1.428321	53.249688	-22.5
B02	389449.0	500427.0	1.3948102	53.274024	-18.8	H06	398170.0	500144.0	1.443715	53.25063	-24.5
B03	389117.0	500462.0	1.393637	53.279208	-18.4	T01	392212.0	500363.0	1.393706	53.270071	-21.5
B04	388163.0	500599.0	1.392040	53.290382	-18.4	T02	392449.0	500399.0	1.394638	53.244669	-22.1
B05	388200.0	500676.0	1.392902	53.297474	-20.0	T03	394241.0	500460.0	1.416137	53.24202	-21.8
B06	390741.0	5004726.0	1.391247	53.290489	-21.7	T04	394674.0	500873.0	1.428312	53.23737	-21.2
C01	390006.0	500523.0	1.390222	53.285702	-20.9	T05	394940.0	500653.0	1.392808	53.25393	-23.1
C02	389271.0	500520.0	1.38783	53.290913	-20.1	J01	392777.0	500165.0	1.403974	53.248112	-22.5
C03	389420.0	500713.0	1.340577	53.302562	-20.2	J02	393509.0	500100.0	1.403974	53.231024	-21.7
C04	389420.0	500793.0	1.333591	53.308910	-20.3	J03	394107.0	500755.0	1.413569	53.21684	-22.3
C05	388265.0	500746.0	1.332165	53.304666	-20.3	J04	394315.0	500704.0	1.420845	53.21222	-21.2
C06	391477.0	5004128.0	1.374170	53.275276	-22.2	J05	394654.0	500246.0	1.391639	53.258473	-21.5
D01	391810.0	5005431.0	1.391778	53.287004	-22.4	K01	392045.0	500092.0	1.391639	53.246002	-21.2
D02	390889.0	5006025.0	1.392975	53.292191	-20.7	K02	391807.0	500092.0	1.390018	53.246002	-21.2
D03	390153.0	5007916.0	1.391778	53.297377	-20.6	K03	392940.0	500034.0	1.391300	53.241413	-20.8
D04	389253.0	5009466.0	1.393201	53.313983	-21.1	K04	393373.0	500735.0	1.402378	53.236214	-21.8
D05	392530.0	5006537.0	1.386377	53.281817	-21.7	L01	391174.0	500152.0	1.398836	53.251789	-21.0
D06	393254.0	5005263.0	1.389917	53.288190	-23.2	L02	391122.0	500146.0	1.398836	53.254633	-18.9
E01	393254.0	5006537.0	1.389917	53.288190	-23.2	L03	391700.0	500693.0	1.393207	53.254618	-20.2
E02	393254.0	5006537.0	1.389917	53.288190	-23.2	L04	391700.0	500693.0	1.393207	53.254618	-20.2
E03	393254.0	5006537.0	1.389917	53.288190	-23.2	L05	393203.0	500693.0	1.393207	53.254618	-20.2
E04	393254.0	5006537.0	1.389917	53.288190	-23.2	L06	393203.0	500693.0	1.393207	53.254618	-20.2
E05	393254.0	5006537.0	1.389917	53.288190	-23.2	Sub St.	391870.0	500265.0	1.378776	53.254608	-21.1
E06	391439.0	500696.0	1.376938	53.301030	-22.0	(OW OCS)					



CONSTRUCTION AND GUARD VESSEL's CONTACT DETAILS

ESVAGT NJORD



Call sign: OWZN2

Bridge Phone: VSAT.TEL: +45 32 71 26 89; / GSM: +45 32 71 26 85

E-mail: njord@esvagtvesel.com

VESTLAND CYGNUS



Callsign: C6BW7

Bridge Phone: VSAT.TEL: +4723677230; +4723677230 / GSM: +47 41 43 02 07

E-mail : captain.cygnus@vestlandoffshore.no ; bridge.cygnus@vestlandoffshore.no